



**direct
Inject**

CAPABILITY STATEMENT

Specialists in concrete remediation, polyurethane injection and robotic hydro-demolition.

ABOUT US.

Direct Inject is a New South Wales-based specialist contractor providing expert services in concrete remediation, polyurethane injection, and robotic hydro demolition. With a focus on innovation, safety, and precision, we deliver high-performance solutions tailored to the demands of civil, tunnelling, and infrastructure projects across NSW.

Our operations are rapidly expanding nationwide, supporting Tier 1 and Tier 2 contractors, government entities, and infrastructure asset owners with reliable, cost-effective, and scalable services.



BACKED BY A TEAM OF EXPERIENCED PROFESSIONALS AND INDUSTRY-LEADING TECHNOLOGY, DIRECT INJECT IS COMMITTED TO DELIVERING QUALITY OUTCOMES AND LONG-TERM VALUE ON EVERY PROJECT.



OUR MISSION.

Our mission is to act as a reliable extension of our clients' teams delivering high-quality concrete remediation and water-stopping services that support the long-term durability of infrastructure assets.

OUR COMMITMENT.

As a business regularly operating in underground environments and around silica-generating activities, we are passionate about limiting silica dust exposure. In response, we have expanded our capabilities to include robotic ultra-high pressure water jetting technology to improve safety and compliance with evolving industry standards.

INTEGRATED MANAGEMENT SYSTEMS.



ISO 9001:2015

**QUALITY
MANAGEMENT**



ISO 14001:2015

**ENVIRONMENTAL
MANAGEMENT**



ISO 45001:2018

**OCCUPATIONAL
HEALTH & SAFETY
MANAGEMENT**

TRAINING AND COMPETENCY.

Direct Inject's workforce are fully trained and certified in accordance with Australian legal and safety standards, including:

- **MSMSS00017** – Use high pressure water jetting equipment
- **MSMSS00018** – Operate a high-pressure water jetting system
- **MSMPER200** – Work in accordance with an issued permit
- **RIIWHS204E** – Work safely at heights
- **High Risk Work Licence** – EWP (Boom-type >11m)
- **HR/HC/MC Licences** – Heavy Rigid / Heavy Combination / Multi Combination
- **C6** – Licence to operate slewing mobile cranes (up to 60 tonnes)
- **Verification of Competency (VoC)** for all plant and task-specific operations
- **RIICRC319** – Saw and cut concrete pavements to initiate planned cracks
- **RIISAM204E** – Operate Small Plant and Equipment

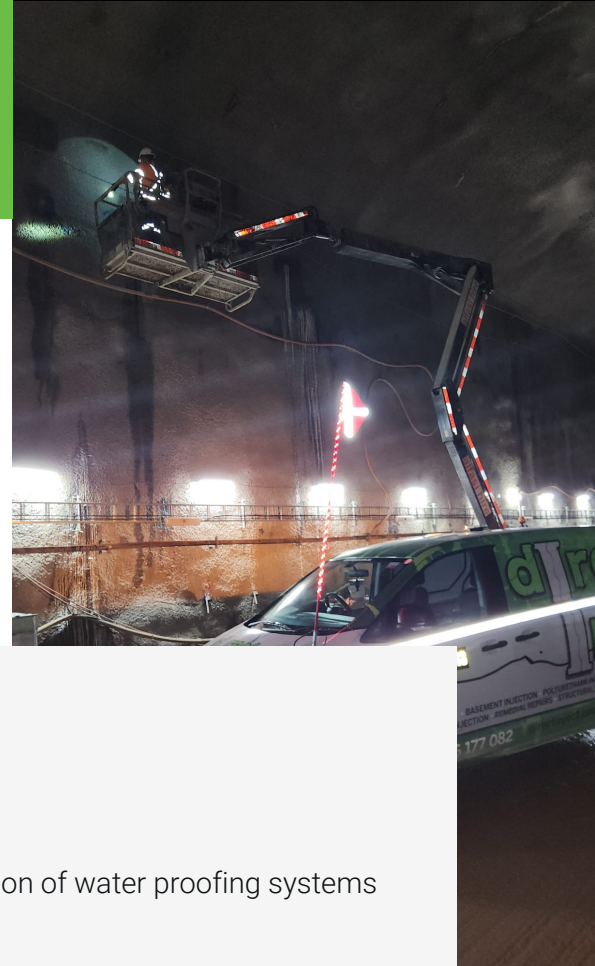
**DIRECT INJECTS REPUTATION
AS EXPERTS AT REPAIRING
LEAKS IN UNDERGROUND
STRUCTURES IS WELL
DESERVED.**

**I HAVE WORKED WITH THEM
ON MULTIPLE TUNNELLING
PROJECTS, AND HAVE
CONSISTENTLY BEEN
IMPRESSED WITH THEIR
RESULTS.**

Project Manager – Acciona 2025

/ OUR SERVICES

CONCRETE REPAIR & INJECTION DIVISION.



CONCRETE REMEDIATION

- Patching surface damage typically <50mm deep
- Rendering typically <3mm deep.
- Surface preparation prior to the installation and termination of water proofing systems
- Dry and wet crack injection
- Void and cavity identification and repair
- Section rebuilding

WATER STOPPING

- Secondary and tertiary annulus grouting of segmentally lined tunnels and shafts
- Back grouting of sub-surface cast in-situ structures
- Gasket needle polyurethane injection in segmentally lined tunnels and shafts
- Construction joint sealing (Incl. Grout tube injection)
- Injection of isolated seepage points (E.g. ground anchors, D-wall panel joints etc)

360 DEFECT MANAGEMENT

- Defect Mapping - Site inspection, measurements, photographic records & detailed reporting
- Defect Repair - Labour, plant, equipment and material supply
- ITP management – completing clients ITC's and taking detailed photographic records

/ OUR SERVICES

HYDRO DIVISION.

Direct Inject are passionate about delivering safer, more efficient solutions for the FRP concrete and civil construction industry, particularly in addressing the serious health and safety risks associated with silica dust exposure. Our fleet of advanced ultra high-pressure water jetting equipment allows us to provide precise, dust-free concrete removal and surface preparation, significantly improving worker safety and ensuring compliance with stringent industry regulations.



SERVICES

- **Selective Concrete Removal**
Precision removal of excess or defective concrete while preserving reinforcement, underlying structures and waterproofing systems.
- **Full-Depth Concrete Removal**
Complete removal of concrete slabs, bridge decks, concrete encasement surrounding buried service pipes and other structural elements.
- **Surface Preparation**
Stripping of surface layers to expose sound concrete for repairs or overlays. Suitable for pavements, walls and curved structures.
- **Circular pile trimming**
Precision removal of excess concrete from cast-in-place or precast concrete piles to the required cut-off level.

FLEET

- **2 x AquaJet 750V Robots**
For precision concrete removal.
- **3 x Aquajet Ergo units**
Offering flexibility in confined or complex workspaces.
- **1 x UHP trailer pump**
There units are capable of 2800 bar and 17 l/min, paired with our aquajet ergo units or hand lancing
- **2 x containerised water treatment plants**
Containerised WTPs allowing for continued recycling of construction water on site ensuring environmentally responsible operations by effectively managing wastewater and reducing site impact.
- **1 x Brokk 200 fitted with a HP lance**
For concrete removal, detailed excavation in rock or reprofiling of shotcrete linings in underground structures without excessive vibration or structural damage.
- **2 x circular pile trimming units**
- **2 x HP trailer pump**
There units are capable of 2800 bar and 17 l/min, paired with our aquajet ergo units or hand
- **2 x containerised HP pumps**
Capable of operating at up to 1000 bar and 261 l/min.



/ PROJECTS

M7-M12 INTEGRATION.

/ PROJECTS

SYDNEY METRO WEST –
WESTERN TUNNEL PACKAGE.

Client

John Holland

Scope

Hydro-demolition of existing
bridge decks and soft saw cutting

Equipment used

AquaJet 750V Robot, Containerised
UHP pump (1000 bar / 260 l/m) and
water recycling system

Client

Gamuda / Laing O'Rourke JV

Scope

Metro Tunnels and station boxes - Concrete remediation and
polyurethane injection



Location

North Section

Scope

Controlled hydro-demolition of existing
bridge deck to expose bar reinforcement in
preparation for future concrete stitch pours.



Location

South Section

Scope

Soft-cutting concrete CRCP pavements to
meet R83 specification.

Location

Sydney Olympic Park Station

Scope

Polyurethane injection of d-wall panel joints
prior to the construction of cast in-situ water
beams.

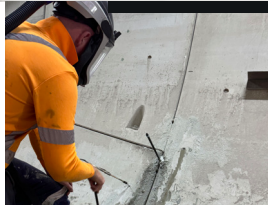


Location

Tunnels

Scope

Completed defect
repairs throughout the full 9km of tunnels
between Sydney Olympic Park and
Westmead stations. Repairs included
structural crack injection and patching
of pre-cast tunnel segments and
polyurethane injection of gasket joints.



Location

Cross Passages

Scope

Contact grouting of
in-situ lining, acrylic chemical injection
of fuko hoses and polyurethane injection
to address ground water ingress from
earthing points and construction joints.





/ PROJECTS

SYDNEY METRO WEST – CENTRAL TUNNEL PACKAGE.

Client

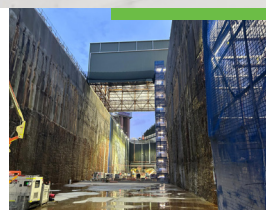
Acciona /
Ferrovial JV

Scope

Metro Tunnels and station boxes - Concrete remediation, contact grouting and polyurethane injection

Location

The Bays Station



Scope

Polyurethane injection to stop ground water ingress from exposed ground anchors that form part of the station boxes retaining structure. The injection works carried out by DI were required to meet strict inflow criteria stipulated in the project specification.

Location

Five Dock Station

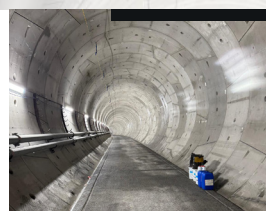


Scope

Polyurethane injection to stop ground water ingress in the cross over caverns to prevent water pressure build up behind sheet waterproof membrane installed in the crown.

Location

Tunnels



Scope

Completed all types of defect repairs throughout the full 11km of tunnels between the Bays and Sydney Olympic Park stations. Repairs included structural crack injection and patching of pre-cast tunnel segments and polyurethane injection of gasket joints.

Location

Cross Passages



Scope

Contact grouting of the cast in-situ lining to fill voids, seal water paths and ensure proper load transfer from the surround rock to the structure. Works also included and acrylic chemical injection of fuko hoses to address leaks and damp patches.

Client

CPB Contractors
/ Ghella JV

Scope

Metro Tunnels, Shafts and Station Boxes - Concrete remediation, Contact Grouting and polyurethane injection

Location

Tunnels

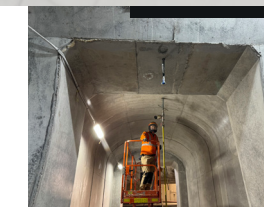


Scope

Completed defect repairs throughout the full 19.6km of tunnels between the St Mary's and Orchard Hills (north section) and Airport Business Park and Aerotropolis (south section). Repairs included structural crack injection and patching of pre-cast tunnel segments and polyurethane injection of gasket joints. DI played a crucial role in helping the principal contractor achieve contractual handover of numerous portions of the project.

Location

Cross Passages



Scope

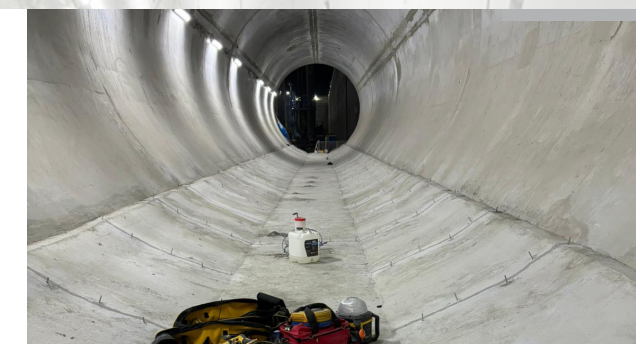
Termination preparation prior to the installation of sheet waterproof membrane, contact grouting of the cast in-situ lining to fill voids, seal water paths and ensure proper load transfer from the surrounding rock to the structure. Works also included and acrylic chemical injection of fuko hoses to address leaks and damp patches.

Location

St Mary's and Aerotropolis cross over stub tunnels.

Scope

Structural crack injection and concrete patch repairs to achieve the required class II finish.





/ PROJECTS

SYDNEY METRO CITY & SOUTHWEST – TUNNELS & STATIONS EXCAVATION.

Client

CPB Contractors / John Holland / Ghella JV

Scope

Metro Tunnels, shafts and stations - Concrete remediation, Contact Grouting and polyurethane injection

Location

Tunnels between Marrickville and Chatswood

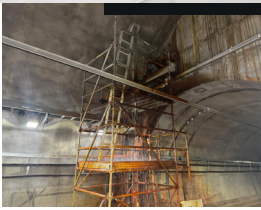


Scope

Completed tunnel defects throughout 31km of tunnels. Repairs included patching of damaged segment erector cones, Segment lips, structural crack injection and polyurethane injection to stop ground water ingress.

Location

Barangaroo Station



Scope

Polyurethane injection to stop high flowing ground water ingress at the cross over cavern headwall adjacent to Sydney Harbour.

Location

Victoria Cross Station



Scope

Polyurethane injection to stop ground water ingress around the cast in-situ linings in the caverns.

Location

Tunnels between Marrickville and Chatswood



Scope

Polyurethane injection to leaking grout ports during planned rail shutdowns.

/ PROJECTS

OTHER PROJECTS.

Project

M12 Motorway

Client

EMC Civil

Scope

Hydro-demolition of existing concrete barriers to expose cast in items.

Equipment used

AquaJet Ergo-go and UHP trailer pump (1500 bar / 50 l/m).



Project

Sydney Metro West – Eastern Tunnel Package (ETP)

Client

CPB Contractors / John Holland / Ghella JV

Scope

Metro Tunnels - Concrete remediation, structural crack injection and polyurethane injection.



Project

WestConnex – Rozelle Interchange

Client

CPB Contractors / Joh Holland / UGL JV

Scope

Road Tunnel - Polyurethane injection of shotcrete lining.



Project

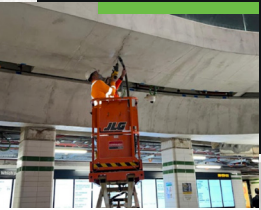
Central Station Upgrade

Client

Laing O'Rourke

Scope

Structural crack injection and polyurethane injection.



Project

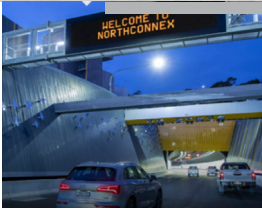
NorthConnex

Client

Lendlease / Bouygues JV

Scope

Road tunnels – Structural crack injection



Project

Sydenham Station Upgrade

Client

Laing O'Rourke

Scope

Bridges and culverts – Structural crack repairs



/ PROJECTS

OTHER PROJECTS.

Project

Parramatta Light Rail

Client

CPB Contractors /
Downer JV

Scope

Bridges and culverts – Structural crack repairs.



Project

6 Parramatta Square

Client

Built / Obayashi JV

Scope

D-wall repairs – Polyurethane Injection.



Project

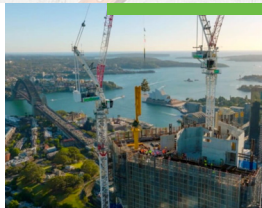
One Sydney Harbour

Client

Lendlease

Scope

D-wall repairs – Polyurethane Injection.



Project

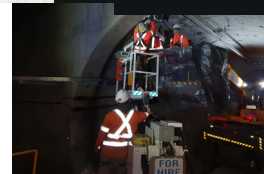
Northwest Rail Link
(NWRL)

Client

John Holland / CPB Contractors JV

Scope

Tunnels – Contact grouting, structural crack repairs and polyurethane injection.



Project

Mulgoa Road Upgrade

Client

Seymour Whyte

Scope

Structural crack repair and patching of existing culverts and contact grouting of new culverts.



Project

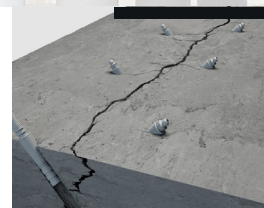
Sydney Science Park

Client

Guidera O'Connor

Scope

Structural crack repair and polyurethane injection of concrete Sydney Water storage tanks.



CUSTOMERS.

**JOHN
HOLLAND**

**CPB
CONTRACTORS**

GHELLA
1894

UGL

LAING O'ROURKE

GAMUDA

**EMC
Civil**

**BOUYGUES
CONSTRUCTION**

**NSW
GOVERNMENT** | Transport
for NSW

ferrovial

lendlease

Downer

OBAYASHI

Built

**SEYMOUR
WHYTE**

acciona

PARTNERS & SUPPLIERS.

DEFECT MANAGEMENT

MC
BE SURE. BUILD SURE.

**MASTER®
BUILDERS
SOLUTIONS**

normet

Sika

HYDRO

**AQUAJET
SYSTEMS AB**

BROKK®

WOMA®
Kärcher Group

PRWATER